

The Kentucky Immunization Registry

Abigail DeSantis

November 9th, 2021



KENTUCKY CABINET FOR
HEALTH AND FAMILY SERVICES



Kentucky Public Health
Prevent. Promote. Protect.

The Kentucky Immunization Registry is an IIS

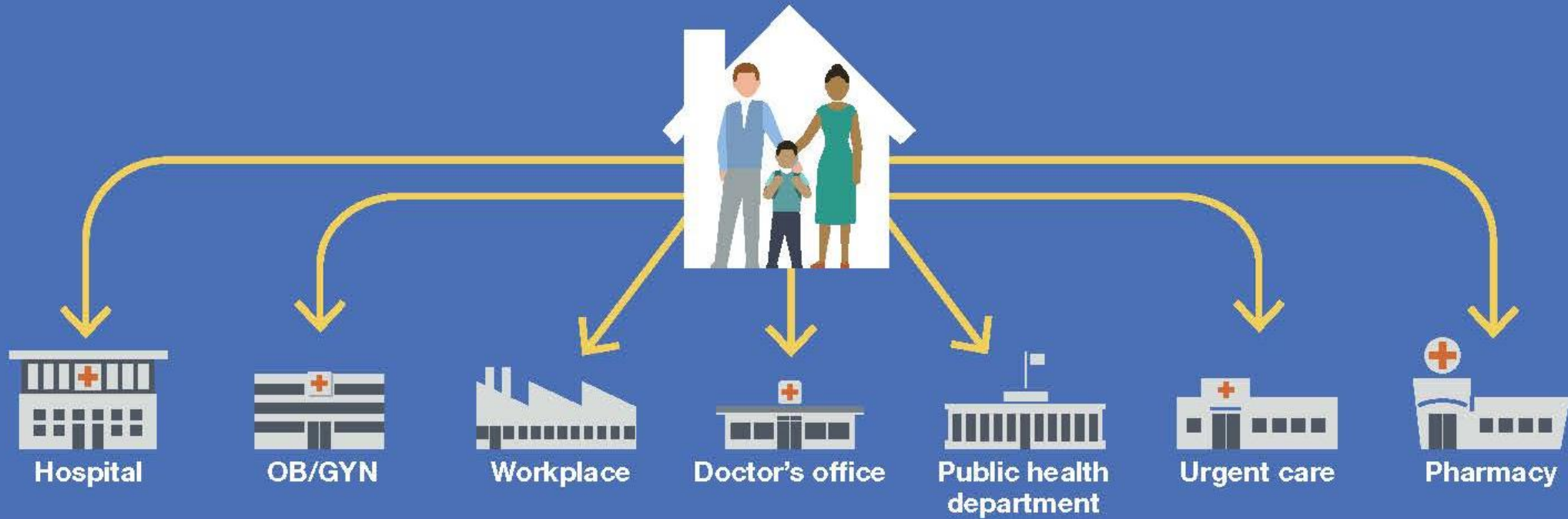
- Statewide Immunization Information System (IIS)
- Information system that houses immunization data on Kentucky residents across-the-lifespan record keeping (birth to death)
- Allows providers the ability to access and retrieve immunization records prior to or at the time of a scheduled appointment.
- Includes standard tools like
 - Patient immunization histories
 - Dose forecasting according to ACIP recommendations,
 - Reminder-recall
 - Official immunization records.

Information within KYIR

- KYIR receives immunization data from all immunizing partners across the state
 - Hospitals
 - Pharmacies
 - Health Departments
 - Clinics
- Via the Kentucky Health Information Exchange (KHIE), KYIR receives and processes electronic immunization information in real time.
- Immunizations manually entered directly into the registry (by providers without an EHR or who aren't compatible with KHIE)
- Newborns are enrolled in KYIR within 10 days of birth through a daily data feed from the Kentucky Cabinet for Health and Family Services, Vital Records Department.
- **Combines individual immunization information into a single, accurate record**

How IIS Works

People receive vaccinations from a variety of places



How IIS Works

These sources send vaccination records to state or city IIS



How IIS Works

IISs provide records to patients and authorized professionals



Parents and general public use the information to enroll children in schools and day care and to determine if they need vaccinations.

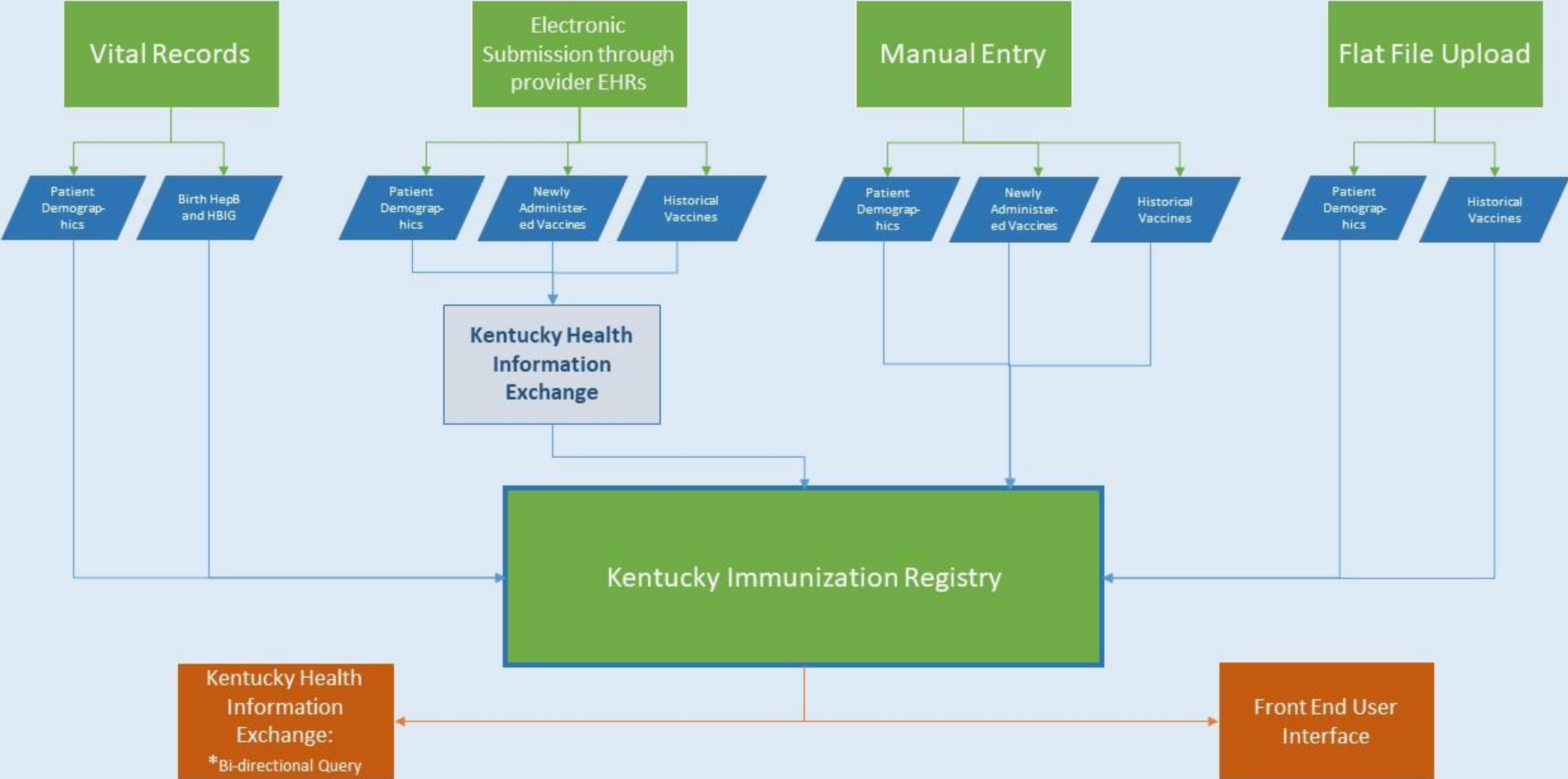


Doctors and health care providers use IISs to determine which vaccinations are needed and to care for patients.



Public health uses the information to develop programs that increase vaccination coverage and decrease the harm caused by vaccine-preventable diseases.

KYIR Data Flow



1 Provides Consolidated Records

Comprehensive records containing immunizations administered at a previous provider office, hospital, pharmacy or school clinic give healthcare providers the full story, preventing patients from receiving too many or too few vaccines.



3 Minimizes Waste

Ensures every vaccine is accounted for and prevents the administration of unnecessary doses of vaccines.



2 Manages Vaccine Inventory

Vaccine ordering, tracking, and administration are all managed in one tool.



4 Forecasts Immunizations

Helpful alerts notify providers to assist with clinical decisions and management of the complex immunization schedule.



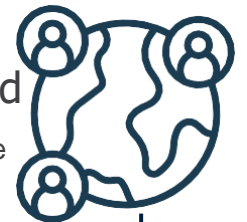
5 Reminds Patients of Due Dates

Automated reminders promote on-time vaccinations.



6 Spotlights Areas of Need

Population-level vaccine coverage data provides a clear view of communities at risk.



7 Expedites Response in an Outbreak

Insights into vaccination status set the stage for effective outbreak response.



How KYIR Promotes Health

- At the *point of clinical care*, KYIR can provide consolidated immunization histories for use by a vaccination provider in determining appropriate client vaccinations
- At the *population level*, an immunization registry provides aggregate data on vaccinations for use in surveillance and program operations, and in guiding public health action with the goals of improving vaccination rates and reducing vaccine-preventable disease.

How KYIR Supports Communities (delete)

- Connects people with information
- Promotes comprehensive immunization records
- Encourages accuracy in timing and dosage
- Increases visibility into areas of need
- Facilitates public health response in the event of an outbreak

KYIR Features

- Vaccine Forecasting
- Certificate Printing for School Entry
- Reminder/Recall
- Vaccine Coverage Assessment
- Inventory Management
- Ad Hoc Reports
 - Immunization Rates
 - Patients Counts by Age and Insurance Source
 - Missed Opportunities
 - Invalid Doses

Vaccine Forecasting in KYIR

- Immunization evaluation and forecasting is a tool that delivers critical and timely information to clinicians and public health to support patient care and improve the immunity of individuals and populations.
 - KYIR uses evaluation and forecasting systems to evaluate a patient's record by comparing immunization history with the recommended immunizations over time.
 - The system also builds a forecast which can recommend current and future immunizations and deliver these recommendations to clinicians at the point of care.
- This functionality leverages complex immunization schedules to create a valuable tool for immunization clinical decision support.
- Software recommends needed vaccines according to the Advisory Committee on Immunization Practices (ACIP) guidelines.

Access to Patient Immunization Certificates, Records, and COVID-19 Vaccine Record

- Users have access to print official patient immunization records from KYIR
 - Official immunization certificate for school entry
 - Ages 18>
 - Official Kentucky Immunization Records
 - All ages
 - Includes vaccines of all types (travel, not just standard)
 - COVID-19 Specific Immunization Record
 - Does not replace CDC issued vaccine card.
 - COVID records will include a QR code for mobile vaccine passports
- Does not require a signature if printed from KYIR

Inventory Ordering and Management

- KYIR is required for providers participating in the Kentucky Vaccines for Children (VFC), Adult Vaccine (317), and COVID-19 Vaccine Programs
- Providers must be connected to KYIR in order, receive and document administration of State or Federal vaccine.
- KYIR is connected to the CDC software platform (Vtrks) for ordering, tracking and documenting doses.

- Enroll in the COVID-19 Vaccine program here
 - <https://govstatus.egov.com/kentucky-vaccine-provider>
- Learn about enrolling in the Vaccines for Children (VFC) program here
 - <https://chfs.ky.gov/agencies/dph/dehp/Pages/vfc.aspx>

Reminder/Recall

- **Reminder/Recall** is the process of identifying under-immunized patients and/or patients who will soon be due for immunizations and bring them back into a clinical setting to ensure that they will receive the doses that they need.
- Use of reminder-recall system to identify patients who are due (reminder) or past due (recall) for immunizations
 - Feature available within some electronic health record systems or free within the Kentucky Immunization Registry (KYIR)
 - KYIR will generate report of identified individuals along with address and telephone number for the individual. Also has functionality to print address labels from the report results

Role of Reminder/Recall During a Pandemic

- When a vaccine is released, reminder/recall systems will identify individuals due or past due for a series dose
 - All doses within a vaccine series must be administered within a certain timeframe to provide proper protection
 - Educational messages can be included with the reminder/recall
- Proven studies have show vaccination coverage rates can increase by up to 30% with the use of reminder/recall systems₁
- Promote the coverage rate of influenza to minimize burden on the healthcare system

Benefits to Enrolling in KYIR

- Free access to a statewide immunization information system (IIS)
- Allows you to search statewide for immunization records for patients of all ages
- Simplifies researching immunization status
- Providers are able to print official records from KYIR for patients
- Identifies vaccines that are due, coming due, or overdue based on the patient's age and immunization status using Advisory Committee Practices (ACIP) logic
- Help vaccinate your community by providing patients with convenient access to immunization services

Who can utilize KYIR?

- Clinicians
- Public health immunizing Facilities
- Other public health programs
- Pharmacies
- Schools and child-care
- Insurers
- Individuals and families

Help Keep Your Community Safe

PATIENT-LEVEL IMPACT



ANSWERS THE QUESTION:

"Is a patient up-to-date on their immunizations? When are their next ones due?"



POPULATION-LEVEL IMPACT



ANSWERS THE QUESTION:

"What percentage of a population is up-to-date on their immunizations?"



- Providers have the opportunity to provide easy access to immunizations and their services can increase coverage rates, particularly for at-risk and under-served populations whom traditional health providers are unable to reach
- Be the solution to increasing adolescent vaccine rates by vaccinating adolescents ages 10-19 and keeping Kentuckians vaccine-healthy
- How KYIR helps in response to outbreaks of vaccine preventable diseases
 - The ability to retrieve data from a consolidated record help health officials determine needs and risk levels in order to take quicker and more effective action.
- Practice a strong recommendation for the flu shot this season. Avoid vaccine-preventable illnesses during the pandemic.

Enrolling in KYIR

- Complete the enrollment forms. Once received, KYIR staff will create your user accounts within 10 days and notify you with your username and temporary password.
- Enrollment forms are located on our website:
<https://chfs.ky.gov/agencies/dph/dehp/idb/Pages/kyir.aspx>
 - [KYIR Enrollment Form](#)-complete one per clinic (each individual site)
 - [KYIR User Confidentiality Agreement](#)-complete one per clinic (CVS) – Business agreement
 - [CHFS 219](#)- every person needing a username and password into the system needs to complete one of these forms
- While a connection to KHIE is beneficial, it is not required.
- Any COVID vaccine administered will have to be reported to us through the registry so KHIE beneficial so you don't have to manually record every dose
 - Information on connecting to KHIE is at www.khie.ky.gov.

Kentucky Immunization Registry Helpdesk

Contact us!

KYIR Helpdesk

502-564-0038

KYIRHelpdesk@ky.gov

Helpdesk Email Hours

Monday – Friday: 8am – 4 pm

Helpdesk Phone Hours

Monday – Thursday: 8am – 4 pm

Friday: 8am – 12 pm

KYIR Resources

- Enroll in the COVID-19 Vaccine program here
 - <https://govstatus.egov.com/kentucky-vaccine-provider>
- Learn about enrolling in the Vaccines for Children (VFC) program here
 - <https://chfs.ky.gov/agencies/dph/dehp/Pages/vfc.aspx>
- KYIR Training Information and Resources
 - <https://chfs.ky.gov/agencies/dph/dehp/idb/Pages/kyirtrain.aspx>

Thank you!

Abigail DeSantis

KYIR Training and Outreach Coordinator

Abigail.DeSantis@ky.gov

<https://chfs.ky.gov/agencies/dph/dehp/idb/Pages/kyir.aspx>



KENTUCKY CABINET FOR
HEALTH AND FAMILY SERVICES



Kentucky Public Health
Prevent. Promote. Protect.