

*FOUNTAIN GARDENS  
GET FIT YOUTH WELLNESS*

Foundation for a Healthy Kentucky

Investing In Kentucky's Future Program

1

---

---

---

---

---

---

---

---

2

---

---

---

---

---

---

---

---

**Purchase Area Health Connections**

- Baptist Health
- Lourdes Hospital
- Purchase District Health Department
- United Way of Paducah-McCracken County
- City of Paducah
- Four Rivers Behavioral Health
- Heartland Rehab
- Kentucky Cancer Program
- KentuckyCare
- McCracken County Public Schools
- Paducah Public Schools
- Passport
- St. Nicholas Family Clinic Foundation
- UK Cooperative Extension Office
- Wellcare
- Anthem Blue Cross Blue Shield

3

---

---

---

---

---

---

---

---

**COORDINATED APPROACH TO CHILD HEALTH (CATCH) PROGRAM**

- The objectives of the CATCH program include improving the knowledge and practice of physical activity and nutrition to improve long term health outcomes.
- CATCH is the most proven program to prevent childhood obesity and launch kids and communities toward healthier lifestyles.
- CATCH creates an environment that makes healthy decisions fun, and its methods make it easy for schools and childcare programs to use the program effectively across disciplines.
- CATCH has been expanded beyond elementary school and now has programs for early childhood through middle school, including the after-school and childcare settings.
- CATCH has the largest evidence base of any obesity prevention program, and is championed by health professionals and school administrators nationwide.
- The original CATCH study was the largest school-based health promotion study ever conducted in the United States.
- CATCH continues to be tested and improved by researchers with The University of Texas School of Public Health.
- More than 25 years of research and real world implementation has gone into this well-renowned, successful program.

4

---

---

---

---

---

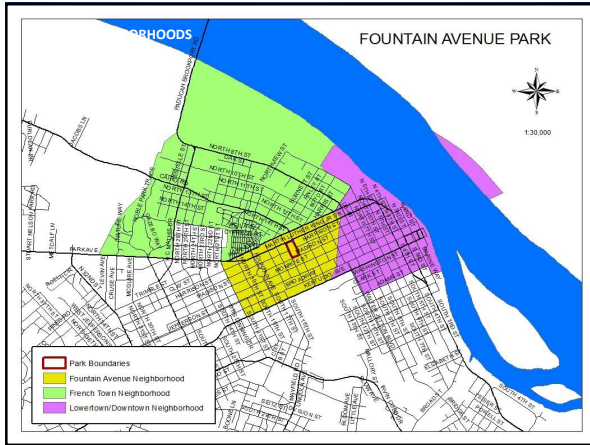
---

---

---

---

---



---

---

---

---

---

---

---

---

---

---



6

---

---

---

---

---

---

---

---

---

---

**TARGET AREA STATISTICS**

Target Area Population:	4,427
Target Area Youth Population:	21.7%
Target Area Minority Population:	46%
Target Area Combined MHI:	\$17,591
Paducah MHI:	\$34,679
McCracken Co. MHI:	\$44,757
McCracken Co. Child Obesity Rate:	15.52%

7

---

---

---

---

---

---

---

---

---

---

**PARK AMENITIES**

▪ Open Free Play Field	▪ Spray Pad/Open Performance Area
▪ Inclusive Playground	▪ Outdoor Fitness Equipment
▪ 1/3 Mile Walking Trail	▪ Public Restrooms
▪ Expansion of Existing Community Garden	▪ Benches/Picnic Areas
▪ Open Market Area	

**PARK THEME**

- Provide a venue to the Paducah School system, Park Services Department and other agencies to educate the public, especially youth, about proper diet and exercise;
- Serve as an outdoor health park;
- Eventually develop professional office space/retail space for medical clinics and related agencies; and,
- Provide upper story living space above the office/retail space.

8

---

---

---

---

---

---

---

---

---

---

**ESTIMATED PROJECT COST:**

Construction:	\$1,249,365
Engineering:	\$ 147,425
Archaeological Study:	\$ 2,394
Contingencies:	\$ 124,937
Mobilization/Bonding:	\$ 99,949
Permits & Bidding:	\$ 44,228
Education Programs:	\$ 75,000
<i>Total</i>	<i>\$1,743,298</i>

**AVAILABLE FUNDING:**

Land and Water Conservation (LWCF):	\$ 75,000
City's Match to LWCF (including in-kind support):	\$ 75,000
Foundation for a Healthy Kentucky:	\$ 400,000
Baptist Hospital:	\$ 25,000
Lourdes Hospital:	\$ 25,000
Paducah Rotary Club	\$ 200,000
Recreation Trails Grant	\$ 68,095
<i>Total</i>	<i>\$ 868,095</i>

9

---

---

---

---

---

---

---

---

---

---

**PHASE 1 PROJECT TIMELINE**

Environmental Review approval by the LWCF Program	May 2016
Implementation of CATCH Education Programs	August 2016
Redevelopment of Community Gardens	Fall 2016/Winter 2017
Engineering Design Completion	June 2016
Bidding	August 2016
Construction Start	October 2016
Installation of Inclusive Playground	June 2016
Phase I Completion	Summer 2017

10

---

---

---

---

---

---

---

---

---

---