

Using the Kentucky Immunization Registry to Reduce Vaccine Preventable Diseases

Sarah Wible

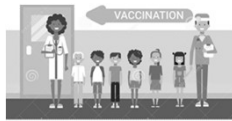
November 14th, 2019



1

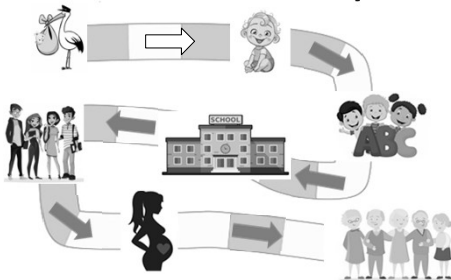
What is an Immunization Registry

- KYIR is an immunization information system (IIS), better known as an immunization registry
- Confidential, population-based, computerized database that records all immunization doses administered by participating providers

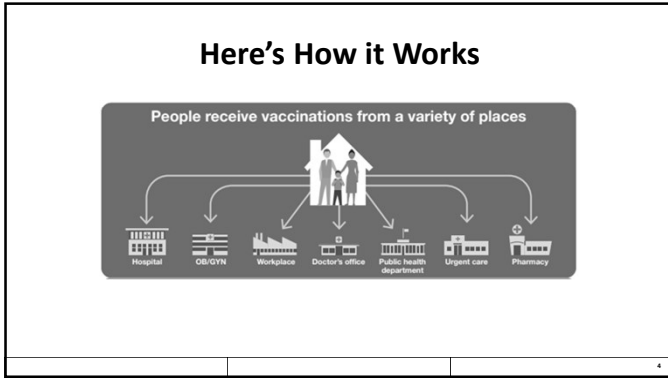


2

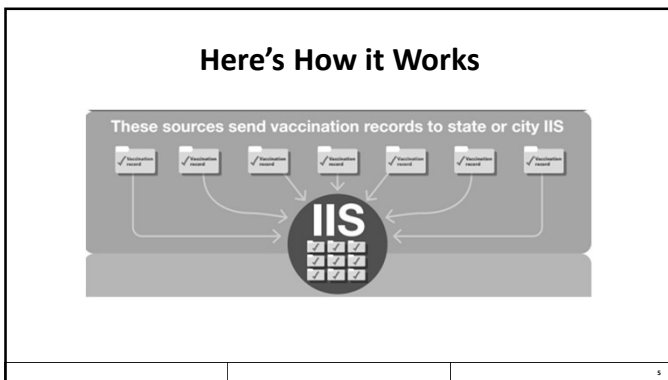
A Patient's Journey



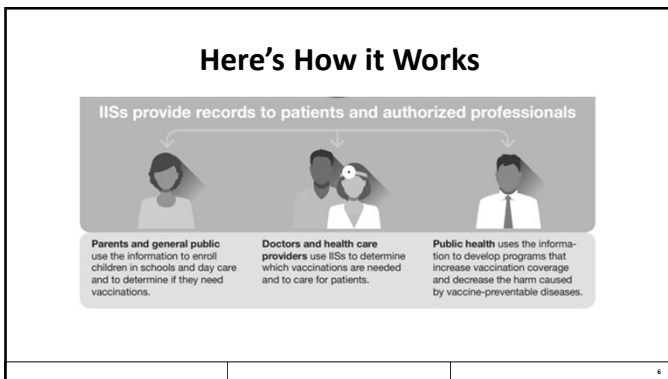
3



4




5




6


What is the Value of KYIR?




Provides Consolidated Records




Manages Vaccine Inventory




Minimizes Waste




Forecasts Immunizations



Reminds Patients of Due Dates



Spotlights Areas of Need






Expedites Response in an Outbreak

7

Who Can Benefit from KYIR?

- Clinicians
- Public health immunization programs
- Other public health programs
- Schools and Childcare Centers
- Insurers
- Individuals and Families

8




Data Submission in KYIR

- **Manual Entry**- users have the ability to log directly into KYIR and enter historical or newly administered vaccine information manually into the system and print certificates
- **Electronic Submission** through the Kentucky Health Information Exchange (KHIE)- patient historical or newly administered vaccine information will be exchanged electronically from the facilities EHR to KYIR through a connection from KHIE. Users can still have direct access to KYIR to research immunization records and print certificates.

9

Why connect your EHR to KYIR?

Connectivity \implies Visibility \implies Collaboration

10

Using KYIR

- Vaccine Forecasting
- Certificate Printing for School Entry
- Reminder/Recall
- Vaccine Coverage Assessment
- Inventory Management
- Ad Hoc Reports
 - Immunization Rates
 - Patients Counts by Age and Insurance Source
 - Missed Opportunities
 - Invalid Doses

11

VACCINE	DOSE 1	DOSE 2	DOSE 3	DOSE 4	DOSE 5
Hepatitis B	10/26/2012	11/12/2012	06/06/2016	✓	✓
AD, Adult Hepatitis B ⁽¹⁾	✓	✓	✓	✓	✓
DTaP/DTaP/DTaP	12/12/2012	06/06/2016	06/11/2018	✓	✓
MM	✓	✓	✓	✓	✓
Pneumococcal	✓	✓	✓	✓	✓
Polio	12/12/2012	✓	✓	✓	✓
Influenza	✓	✓	✓	✓	✓
MMR	✓	✓	✓	✓	✓
Varicella	✓	✓	✓	✓	✓
Hepatitis A	06/06/2016	09/11/2018	Had Chikungunya or Zoster Disease	Yes	✓
Meningococcal	✓	✓	✓	✓	✓
Td	✓	✓	✓	✓	✓
Tdap	✓	✓	✓	✓	✓
Rotavirus	✓	✓	✓	✓	✓
HPV	✓	✓	✓	✓	✓
Men B	✓	✓	✓	✓	✓
Pneumococcal (PPV23)	✓	✓	✓	✓	✓

(1) Alternative two dose series of approved adult hepatitis B vaccine for adolescents 11 through 15 years of age. (2) DTaP, DTaP, or DT. (3) MMR not required at 5 years of age or more.

This child is up-to-date for immunizations until / / (14 days after the next shot is due) after which this certificate is no longer valid and a new certificate must be obtained.

This child is not up-to-date at this time. This certificate is valid until 11/27/2019. (14 days after the next shot is due) after which this certificate is no longer valid and a new certificate must be obtained.

Reason child is not up-to-date:

Provisional Status - Child is behind on required immunizations.

Medical Exemption - The following immunizations are not medically indicated:

Religious Exemption - Can these vaccines be administered at a later date? No: Yes: Date: / /

12

Questions

For general questions or to enroll in KYIR please reach out to our Helpdesk.

Phone: 502-564-0038

Email: KYIRHelpdesk@ky.gov